



THE ATHENAEUM  
HOTEL & RESIDENCES





WELCOME





[https://docs.google.com/presentation/d/1fh4w06cT7RnOo0U7EksDD\\_MH7DPDWVmnCsUhF6p1o3A/edit?usp=sharing](https://docs.google.com/presentation/d/1fh4w06cT7RnOo0U7EksDD_MH7DPDWVmnCsUhF6p1o3A/edit?usp=sharing)



LOCATION







SUPERIOR ROOM







DELUXE ROOM







# DELUXE ROOMS

---



## DELUXE ROOMS

Capturing the spirit of Mayfair, our Deluxe Rooms incorporate bespoke design, eccentric artwork and innovative mod-cons pave the way for an original five-star stay.



## DELUXE BAY WINDOW ROOMS

Our Deluxe Bay Window Rooms feature the same layout and styling as our Deluxe Rooms, but have a wonderful bay window, from which to enjoy views of Mayfair.







GREEN PARK SUITE







# SUITES

---



## GREEN PARK SUITES

With floor-to-ceiling views of Green Park and separate living spaces, our Green Park Suites capture the highlights of our locality.

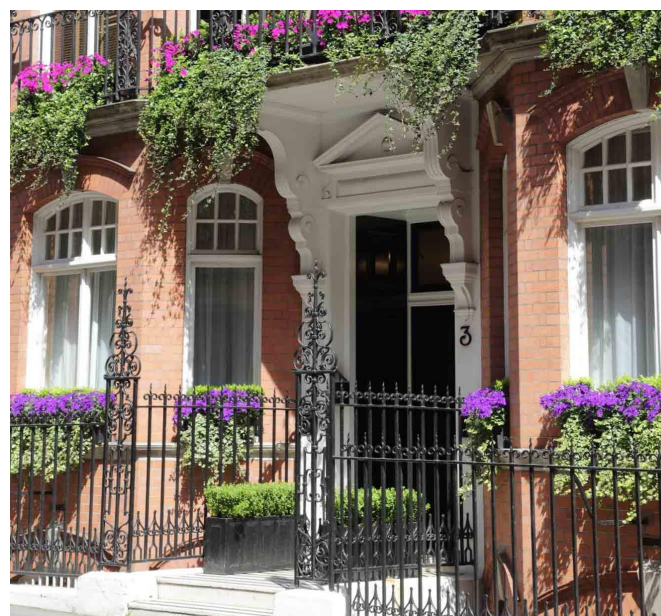


## MAYFAIR SUITES

Open-plan living provides the perfect setting for looking out over historic Mayfair traditional Victorian red-brick buildings.







TOWNHOUSES







# RESIDENCES

---



## YOUR OWN FRONT DOOR

Set within traditional red-brick townhouses, just a stone's throw from London's top landmarks, our townhouse Residences offer modern London living from buildings rooted in history. Each 550 ft<sup>2</sup>/50 m<sup>2</sup> Residence is accessed via your own front door, with the possibility of discreet internal entry to the hotel too.







BEDROOM & BATHROOM RESIDENCES







MEETINGS & EVENTS FACILITIES 





# ST JAMES'S & GREEN PARK

---

Our team at The Athenaeum take pride in our standards, whether you are planning a small board meeting or an event for 80. All meeting spaces have natural light – a rarity in central London – with views over Mayfair's leafy Green Park. With dining courtesy of Head Chef, Ian Howard, expect mouth-watering dishes for all occasions. Our team will happily share a range of menus for you to choose from.







HYDE PARK ROOM







116 AT THE ATHENAEUM





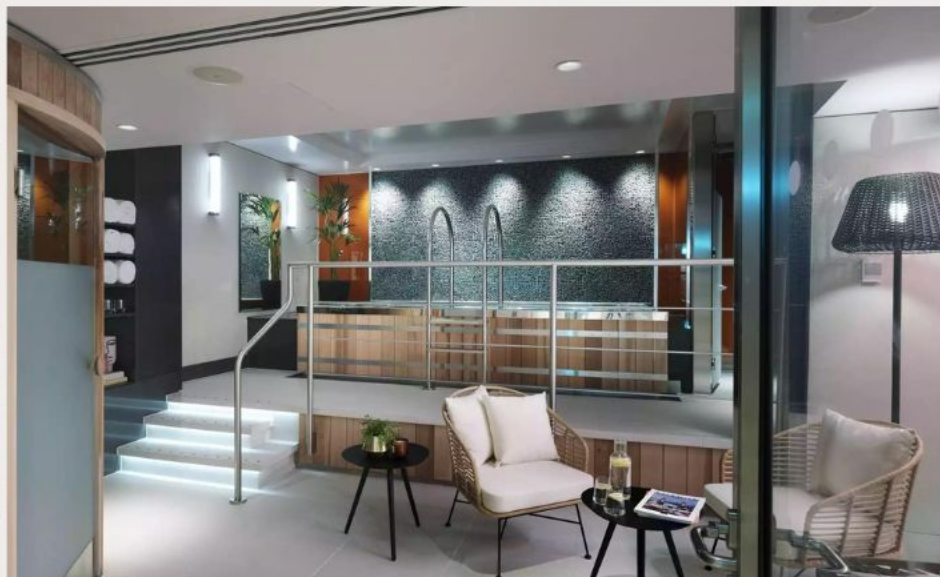




# THE SPA AT THE ATHENAEUM

---

Whether you're looking for a reviving facial or full body scrub, The Spa has a variety of treatments that will leave you feeling rejuvenated. After your treatment you can relax in the bubbling hot tub, sauna, steam room, and relaxation space.



*Indulge in bespoke Temple Spa treatments or enjoy a spa experience – perfect for a spot of relaxation combined with delicious fare at our restaurant, 116 at The Athenaeum.*







# CONCIERGE

The Athenaeum is conveniently situated in the heart of Mayfair, only a hop-skip-and-jump away from local attractions like Buckingham Palace. Make a quick stop at our concierge, Miguel, who will be able to curate experiences and tours according to your taste. He knows the ins and outs of everything concerning luxury shopping and bespoke hidden gems around the city that you don't want to miss out on.







# THE VIEW

---

Discover London's new member-style club at The Athenaeum Hotel & Residences.

