

Visit
our 3D
virtual
tour

**LONDON
MUSEUM**
DOCKLANDS



Daytime Hire 2024
London Museum Docklands



A PASSION FOR THE BEST EVENTS IN LONDON



Located in the heart of East London, London Museum Docklands is an inspiring backdrop for a wide range of events, offering versatile daytime and evening spaces, alongside a fantastic choice of catering options.

Our event spaces are fully accessible, we have green initiatives running throughout the museum and our dedicated events team are on hand to ensure a seamless experience.

As a not-for-profit organisation all monies raised from events at the museum are used to preserve the artefacts in our collections and the history of London for future generations.





THE QUAYSIDE ROOM

[Click here for further details](#)

The abundance of natural daylight and stunning views from the Quayside Room provide an impactful space for meetings and workshops.

With flexibility in layout, it is a popular venue for any number of events. Located on the third floor, the room leads directly onto our galleries which your guests are welcome to explore when the museum is open.

Capacity

Theatre style	110
Cabaret	81
Boardroom	25
Reception	150
Seated lunch	100

Room hire includes

Projector, PA system including 1 x handheld microphone and Wi-Fi access



THE WILBERFORCE ROOM

[Click
here for
further
details](#)

Perfect for a whole variety of daytime events, the Wilberforce Room has all of the unique charm of a 19th century warehouse, whilst being brought right up to date with an audio-visual system. This flexible event space has capacity for up to 273 seated guests.

There is direct access to the adjacent Quayside Room which provides the perfect breakout space.

Capacity

Theatre style	273
Cabaret	180
Boardroom	40
Reception	350
Seated lunch	240

Room hire includes

Projector, screen, PA system with 1 x handheld microphone, lectern and Wi-Fi access



THE RIVERSIDE ROOM

[Click here for further details](#)

The impressive Riverside Room benefits from its own entrance and private terrace.

With exposed brick walls and original wooden columns and floors, the Riverside Room is a flexible space for a wide range of events. The private terrace has additional capacity for 350 guests standing where delegates can enjoy a break from their daytime event.

Capacity

Theatre style	150
Cabaret	108
Boardroom	30
Reception	300
Seated lunch	150

Room hire includes

Projector, screen, PA system with 1 x handheld microphone, built-in lectern and Wi-Fi access



THE BOARDROOM

[Click here for further details](#)

Located on the first floor with views out to the towering Canary Wharf skyline, this room is ideal for smaller meetings or dinners for up to 20 people.

Its peaceful location and abundant natural daylight make it a charming choice for more intimate events.

A built in projector and screen are provided in the room, and conference phone facilities can be provided.

Capacity

Boardroom

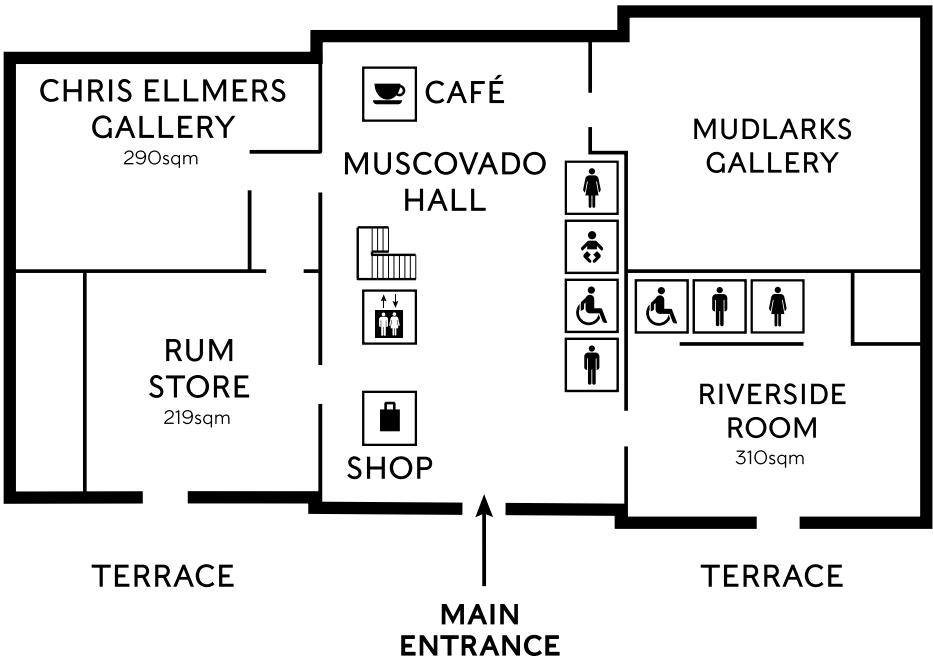
20

Room hire includes

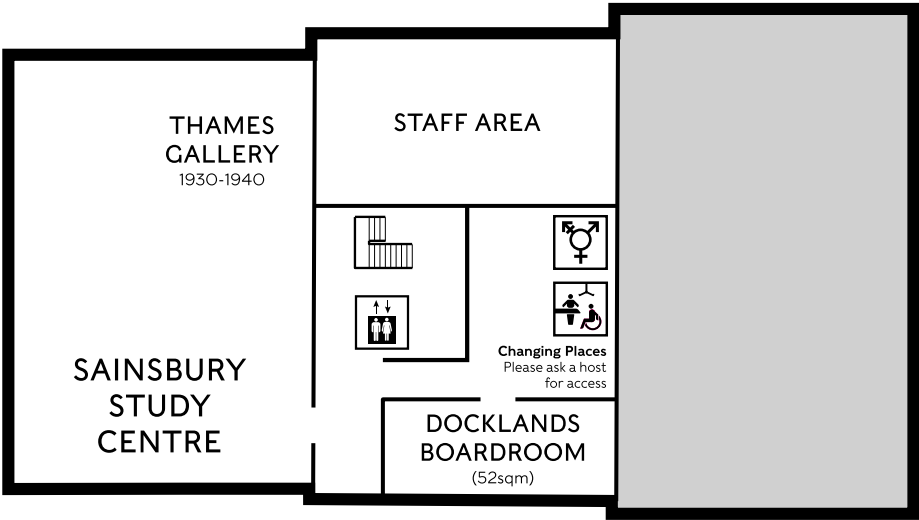
Projector, screen, laptop speakers and Wi-Fi access and plasma screen

FLOORPLANS

GROUND FLOOR

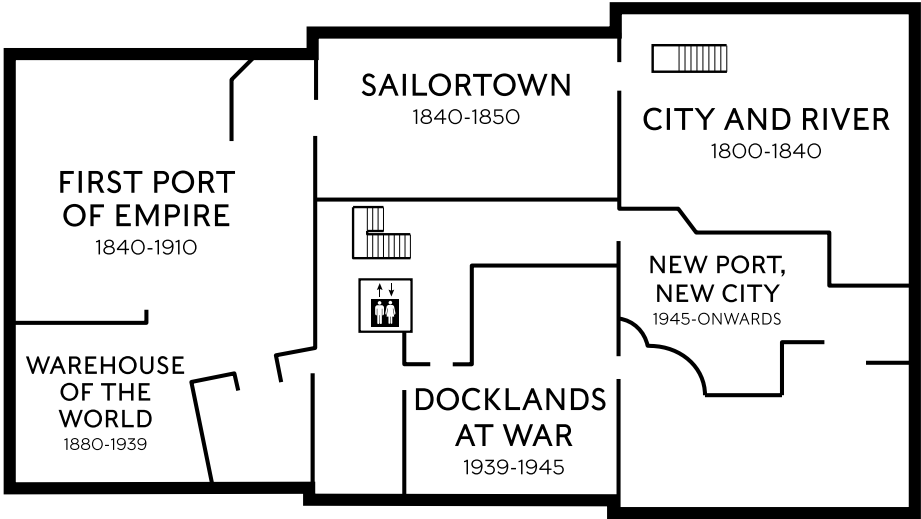


FLOOR 1

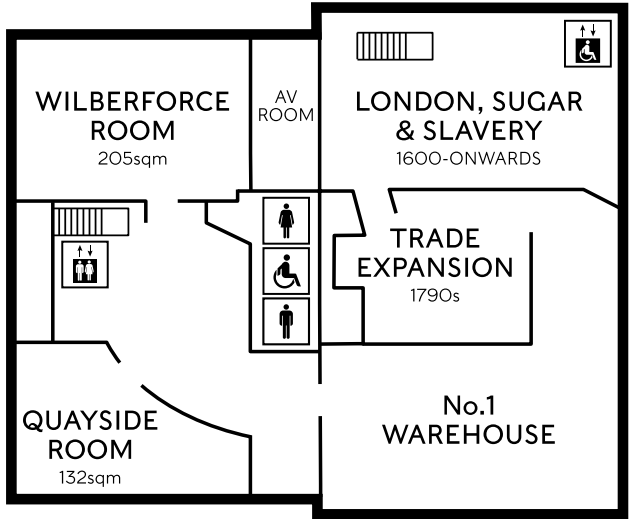


FLOORPLANS

FLOOR 2



FLOOR 3





PRICES

[Click here for further details](#)

Combinations of rooms can be booked at a discounted rate.

Additional prices apply for catering and additional AV requirements.

All prices are subject to the addition of VAT at the standard rate.

Prices subject to alteration, please ask for a full quote.

Full day hire 9am – 5pm

Boardroom	£750
Quayside Room	£1,200
Riverside Room	£2,200
Wilberforce Room	£2,300

Extended hours are available, subject to an additional hire fee.

Drinks reception in the galleries after your event at £1,000 per hour.

Catering provided by Bovingdons, for more information please go to:
<https://www.londonmuseum.org.uk/commercial/venue-hire/prices/>



EVENING EVENTS

[Click
here for
further
details](#)

London Museum Docklands can provide some fantastic options for post-event receptions and dinners, with incredible menus to match.

In the evening, the museum's two floors of galleries can be hired privately as well as the ground floor Muscovado Hall.

The museum also has a selection of Summer and Christmas packages.

Capacity

Dinner	200
Reception (Muscovado Hall)	400
Reception (Whole museum)	1500

Room hire includes

Projector, screen, laptop speakers and Wi-Fi access



CATERING

A wide range of lunch and break menus are available from in-house caterer Bovingdons, with a focus on seasonal British ingredients and sustainability.

EXPERIENCES

Our team love creating memorable event experiences, and with such an incredible history, private guided tours are a great addition to any event. Object handling with a curator, and even private ghost tours, can be arranged to enhance your event! All subject to availability.



→ **CONTACT**

London Museum Docklands
West India Quay
London E14 4AL

venuehire@londonmuseum.org.uk
londonmuseum.org.uk
[@ldnmuseum_venuehire](https://www.instagram.com/ldnmuseum_venuehire)
020 7814 5789

Nearest stations:
Canary Wharf
West India Quay
Westferry

**LONDON
MUSEUM**
DOCKLANDS

