

THE  
KENSINGTON  
DOYLE COLLECTION

# THE KENSINGTON

DOYLE COLLECTION • LONDON

# THE KEN SING TON

---

*Sophisticated  
elegance in  
the heart of  
South Kensington*

---



The Royal College of Surgeons  
185-186  
MANSON  
PLACE SW7









---

## WELCOME TO THE KENSINGTON

---

Located in the heart of South Kensington, one of London's most charming neighbourhoods, the stylish Kensington hotel sits only moments from The Royal Albert Hall, The Victoria and Albert Museum, Kensington Gardens and world-famous Harrods.

With open fires, high ceilings and heritage décor, the hotel's elegant drawing rooms evoke a sense of Victorian grandeur and provide the perfect setting to read a good book or a tête-à-tête. Lunch, dinner and our quintessentially English 'London Landmarks Afternoon Tea' may be enjoyed in stylish Townhouse whilst delicious cocktails and our expansive 'Terroirs' wine list may be savoured in the warm surrounds of wood-cladded K Bar.

Guestrooms and suites reflect a delicate blend of period charm and modern comfort while the hotel's signature suites take luxury to a new level.

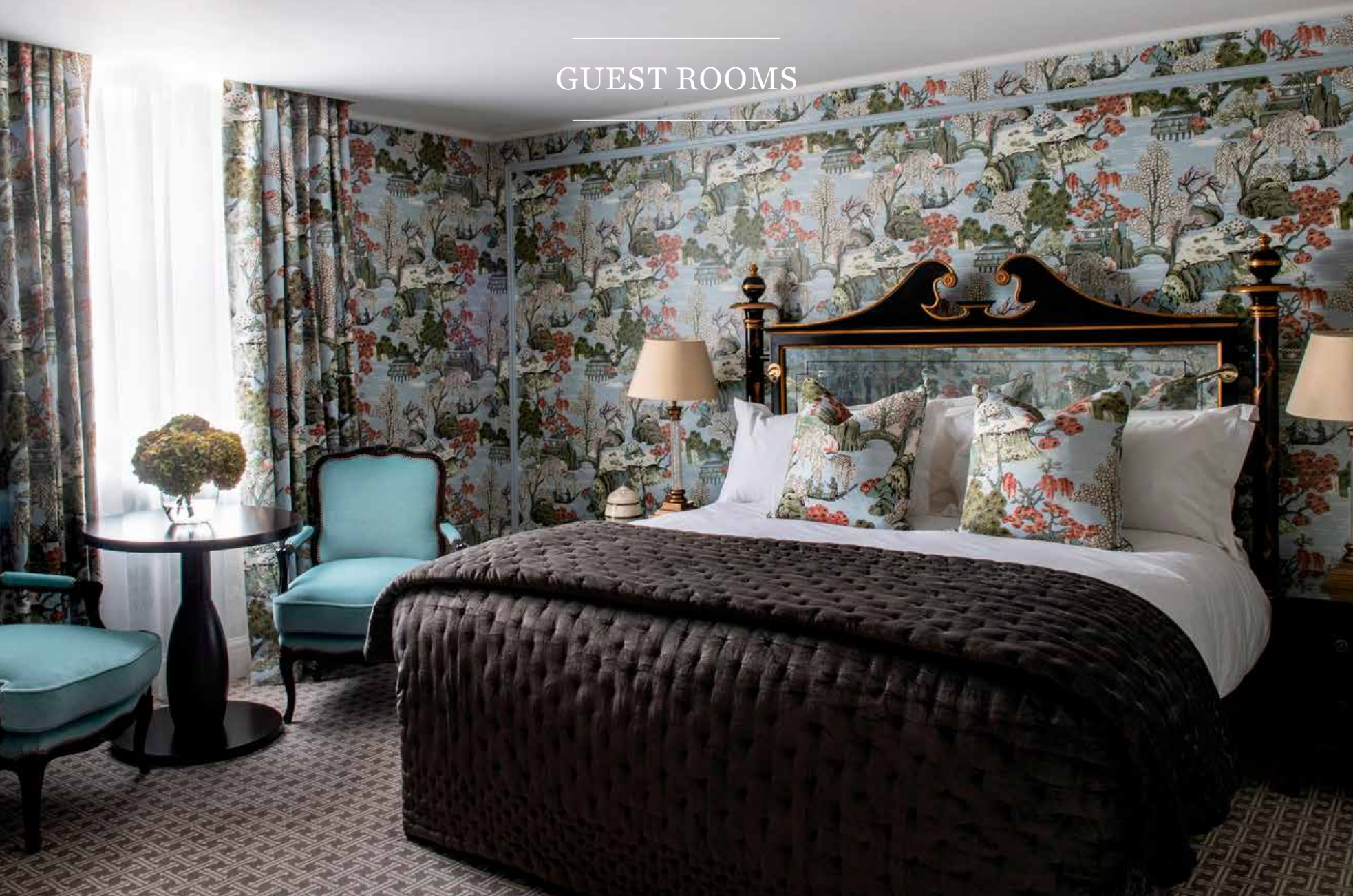
In essence, it all combines to lend a personal, familiar ambience - reminiscent of a members' club, where everyone feels like they belong.



---

## GUEST ROOMS

---







Historic charm meets sleek contemporary style in The Kensington's 126 guest rooms. Complementing this historic building's classic Victorian townhouse architecture, each room is decorated in a light and elegant style using brightly coloured wallpapers and fabrics in bold floral and toile patterns.

## SUITES











An exquisite blend of period charm and modern comfort, The Kensington's 24 suites reflect the epitome of refined luxury set within the timeless glamour of London's leafy museum district.







RESTAURANT & BAR





The natural charm of the hotel's Drawing Rooms provides the ultimate backdrop for Afternoon Tea while Townhouse provides a stylish setting for lunch and dinner.



---

## RESTAURANT & BAR

---







### THE K BAR

Delicious cocktails, fine spirits and the expansive 'Terroirs' wine list may be savoured in the warm surrounds of wood-cladded K Bar.

## MEETINGS & EVENTS







Town House offers a graceful blend of classic heritage and flawless modern style.

With three interconnecting drawing rooms featuring enchanting detail such as a hidden whiskey bar, a carefully curated library and cosy fireplaces, Town House hosts a restaurant, private dining and event space - providing a unique venue for intimate dinners, glamorous drinks receptions, book launches and informal meetings.

# SLICE OF THE CITY



## SOUTH KENSINGTON - LONDON'S 'MUSEUM MILE'

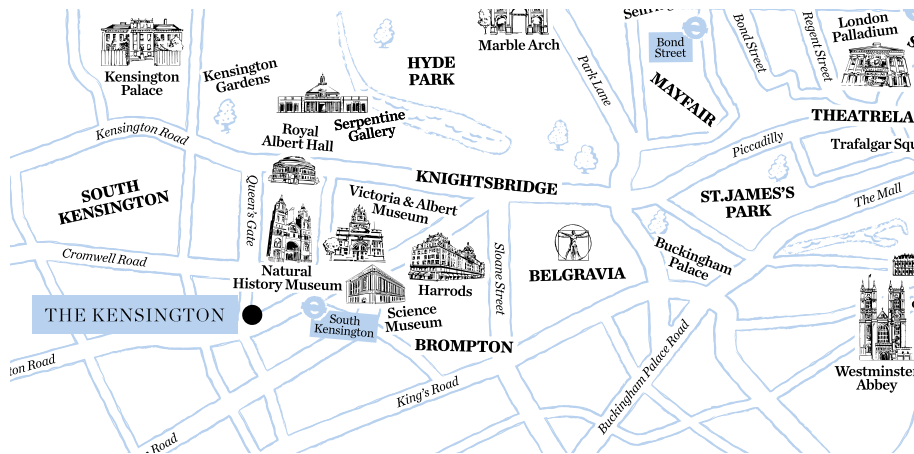
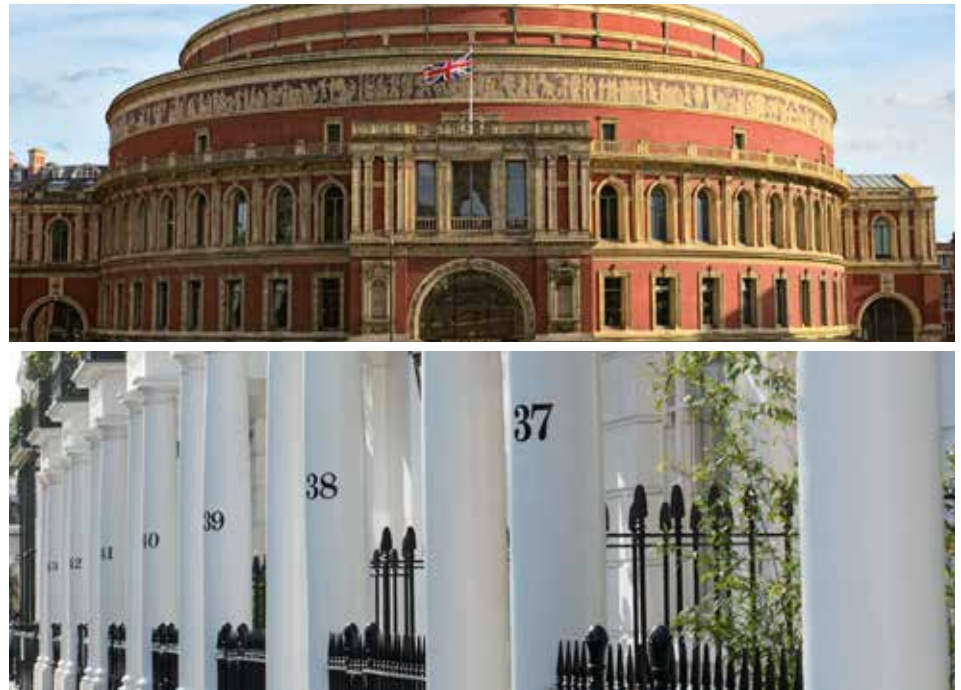
There's a new spirit on Exhibition Road, the gracious thoroughfare that connects Hyde Park to South Kensington. Indeed, there's a new road. In 2011 the grand but neglected street had a £28m refurbishment - and it's now a swish boulevard that befits its status as home to 19 world-class cultural and educational organisations. Built and named for the Great Exhibition of 1851, Exhibition Road is a global centre by any judgement. There are world-class colleges here - the Royal College of Art, the Royal College of Music and renowned science institution Imperial College - a fantastic clutch of museums, and heaps of imperial grandeur. As you arrive at Hyde Park's southern flank from the north, you see the Albert Memorial and the Royal Albert Hall face each other each side of Kensington Gore - and there can be few more handsome streetscapes. The former is an extraordinary edifice to Prince Albert, Queen Victoria's

lamented paramour, while the latter plays host to multifarious events including, each year, the BBC Proms concerts. Opposite is Kensington Gardens - the western end of Hyde Park - and Kensington Palace, once home to Diana, Princess of Wales and now London residence of the Duke and Duchess of Cambridge. You can visit the State Apartments to bring this royal lineage to life.

Track back, along Exhibition Road itself, and you'll find those museums. To one side: the Victoria and Albert Museum. Devoted to art and design from the past 3,000 years, it houses ceramics, furniture, fashion, jewellery, photographs, sculpture, textiles - a huge mixed bag of fascinating things, across 145 galleries. Some years ago the V&A was dusty and labyrinthine. Now it's a real destination, with a glorious central courtyard that's like a piece of Tuscany

transplanted to London. Check out its Friday evening socials, headline exhibitions and find quiet spots such as the Cast Courts, where Classical figures disport in rooms of Victorian splendour.

Over the road, equally extraordinary, is the Natural History Museum. Even without any exhibits, this building would be a major attraction. Designed by Victorian architect Alfred Waterhouse, it's a cathedral to the life sciences, with a setting as monumental as its dinosaur displays and whale models. While inside, look out for the building's carvings, all on a natural theme, and if you're here in winter, visit the wonderfully photogenic ice-rink. A short walk away is the Science Museum – another 'must'. Its Making the Modern World gallery is an awe-inspiring collection, including the early train Stephenson's Rocket, Crick and Watson's model of DNA, Charles Babbage's difference engine and the Apollo 10 capsule – and the whole museum is of such educational value that during the day you may have to run the gauntlet with hundreds of (mostly well-behaved) schoolchildren. By the time you emerge back onto Exhibition Road, blinking into the light, you'll have had a rollercoaster ride through the history of the world.



---

## TRAVEL HUBS

Within a 5-minute walk: South Kensington and Gloucester Road Tube Stations. Within a 10 to 15 minute tube journey: Paddington Station (Heathrow Express), Victoria Station (Gatwick Express).

---

## ATTRACTIONS

Within a 5-minute walk: Victoria & Albert Museum, Natural History Museum and Science Museum. Within a 10 to 15-minute walk: Harrods, Harvey Nichols, Knightsbridge, Kings Road, Sloane Square, Kensington Palace, Royal Albert Hall, Kensington Gardens, and Hyde Park.



OUR FACILITIES

Total Bedrooms: 146 | Suites: 28 | Meeting Spaces: 2 | Max Meeting Capacity: 40  
In-house Gym | Business Centre | Car Park close by | Complimentary Wi-Fi | Drawing Rooms and Lounges | Pashley Bike Hire  
Restaurant & Bar: Town House | The K Bar | The Juicery

Loyalty Programme: DISCOVERY

MEETING & EVENT SPACE CAPACITIES

The three interconnecting drawing rooms of Town House at The Kensington are available for private hire, either individually or collectively, for meetings, private dinners, buffets or cocktail and canapé events.

Room	Dimensions	Area	Reception	Dinner	Theatre	Buffet	Boardroom	Cinema
THE LIBRARY	8.56 x 4.08 x 2.9m	34.9m <sup>2</sup>	34	24	-	-	-	-
	28.1 x 13.5 x 9.6ft	114.6 ft <sup>2</sup>						
combined with The White Room	-	-	84	58	-	-	-	-
THE WHITE ROOM	8.85 x 6.5 x 2.9m	57.5m <sup>2</sup>	50	34	40	40	-	-
	29.1 x 21.4 x 9.6ft	188.8 ft <sup>2</sup>						
THE STUDY	9.75 x 4.1 x 2.9m	39.9m <sup>2</sup>	34	20	-	-	20	18
	31.1 x 13.5x9.6ft	130 ft <sup>2</sup>						

BOOKING CODES

GDS: Galileo JD 44769 | Sabre JD 33810 | Amadeus JD LONJUR | Worldspan JD 20715

CONTACT

📍 /TheKensingtonHotel @ @HotelKensington  
109 - 113 Queen's Gate, South Kensington, London, SW7 5LR, UK  
T +44 20 7589 6300 E [kensington@doylecollection.com](mailto:kensington@doylecollection.com) W [doylecollection.com/kensington](http://doylecollection.com/kensington)

DOYLE COLLECTION

At the heart of our business is a warmth of service that stems from our family ownership, imbuing our properties with the familiarity of a member's club and the intimacy of a private home. Each of our eight hotels – landmark buildings in unrivalled city locations, has its own distinct personality that is rooted in, and authentic to, its neighbourhood. Innovation and ongoing investment ensure a boutique, cosmopolitan yet local feel – as seen in our cool destination restaurants, bars and event spaces – while our heritage lends character to our vision of informal luxury, timeless style and the very best guest experience.

---

# THE DOYLE COLLECTION

LUXURY

---

THE KENSINGTON

LONDON

THE MARYLEBONE

LONDON

THE BLOOMSBURY

LONDON

THE WESTBURY

DUBLIN

*The Dupont Circle*

WASHINGTON DC

URBAN

---

THE BRISTOL

BRISTOL HARBOURSIDE

THE RIVER LEE

CORK

**THE CROKE PARK**

DUBLIN

---

doylecollection.com

STING